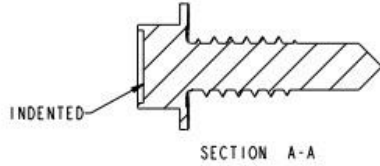
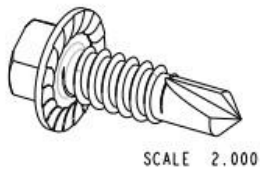


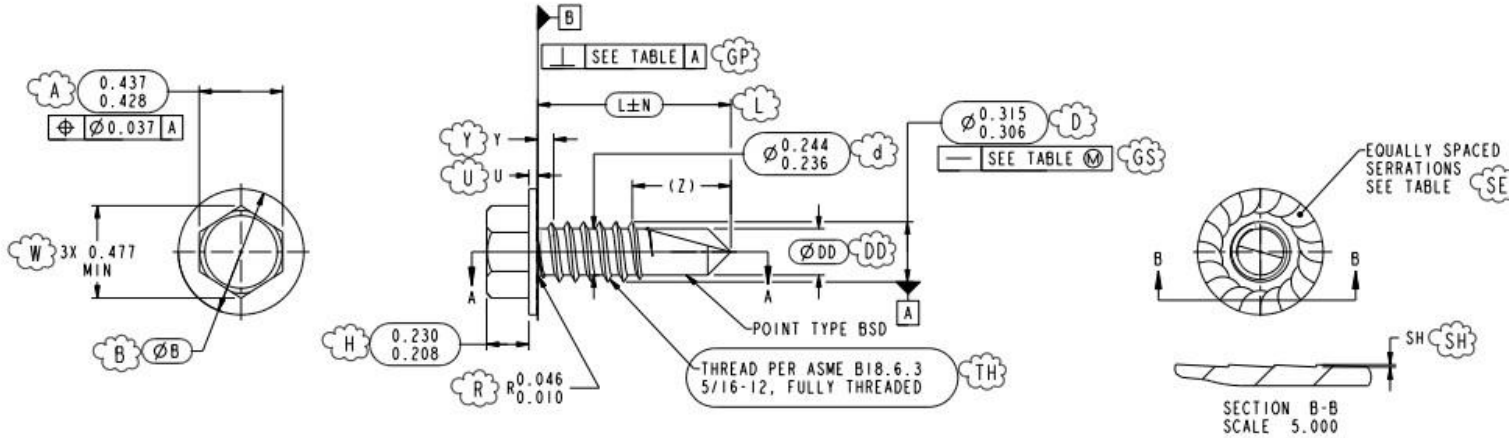
图号: 31969

螺纹: 按 ASME B18.6.3 标准, 5/16-12 全螺纹.



MATERIAL				HARDNESS (SEE NOTE 9)					
STEEL			HEAT TREATMENT (SEE NOTE 8)	CORE HARDNESS		CASE HARDNESS		TOTAL CASE DEPTH	
CARBON TYPE	STANDARD	DESIGNATION		SCALE	RANGE	SCALE	RANGE	TEST STANDARD	RANGE
LOW-MEDIUM	(SEE NOTE 6 AND 7)		CASE HARDENED	HRC	40 32	HRC	58 52	SAE J423	0.011 0.005

FINISH (SEE NOTE 10 AND 11)	
TYPE	DESCRIPTION
ZINC PLATED	Fe/Zn 3A



PERFORMANCE TESTS (SEE NOTE 12)			
DRIVE TEST (SECONDS)	TORSIONAL STRENGTH TEST (LB-IN)	DUCTILITY TEST WEDGE BLOC ANGLE	HYDROGEN EMBRITTLEMENT TEST
MAX	MIN		
5	150	5°	YES

PAGE	PART NUMBER	NORMALIZED DESCRIPTION	THREAD DATA							HEAD DATA						GEOMETRIC DATA		UNIT WEIGHT (g)				
			Y	L ± N		POINT (SEE NOTE 2)				HEX HEAD TYPE	B		U		SERRATIONS		STRAIGHTNESS (SEE NOTE 4) (0.006 X L) MAX		PERPENDICULARITY (SEE NOTE 5) MAX			
				UNTHREADED LENGTH	NOMINAL LENGTH	TOLERANCE ON LENGTH	STYLE	Z (REF)	Ø DD DRILL TIP MIN		RECOMMENDED PANEL THICK. (SEE NOTE 13)	MAX	MIN	MAX	MIN	QTY				DIRECTION	SH TEETH HEIGHT	MAX
2	---	HEX SERRATED WASHER HEAD 7/16 AF SELF-DRILLING TAPPING SCREW 5/16-12 X 1 TYPE BSD, HARDENED CARBON STEEL, Z/P PER ASTM F1941 Fe/Zn 3A	0.083	1.000	±0.030	#4	0.510	0.265	0.312	0.110	INDENTED	0.676	0.624	0.055	0.035	18	REVERSE	0.015	0.010	0.008	0.023	10.9

六角锯齿垫圈头钻尾丝 7/16 头 5/16-12\*1"

螺纹尺寸公差

头部尺寸公差

几何数据

重量

材质: 低碳钢 标准:ASTM F2282 C=0.13-0.27 MN=0.64-1.71, 芯部硬度:HRC32-40 表面硬度:HRC52-58. 全硬化深度:0.005-0.011" 检验标准:SAE J423

表面处理:电镀锌

机械性能: 抗扭强度: 150LBS/IN

备注:

- 1: 圆圈和云朵标记尺寸为重要尺寸
- 2: 热处理:渗碳 回火温度 625F,(330 度)最小.
- 3: 硬度测试标准: IFI-113 (R2013)

4: 电镀后尽快在 190-230 度温度范围内烘烤 1 小时, 以避免氢脆

3: 数量: 1200000